

# Guidelines for Brose's suppliers

## International Material Data System (IMDS)

### 2017

#### 1. Intention

This document summarizes the Brose specific requirements for suppliers' Material Data Sheets (MDS) created in IMDS. The IMDS recommendations (see 6.) remain unaffected by this document and are mandatory. The existing OEM documents dealing with IMDS, as far as known to us, do not contain substantial differences regarding the requirements of IMDS entries.

#### 2. Formal Requirements

The following formal requirements must be fulfilled in order to guarantee the correct data exchange with Brose-internal systems. The required data must be entered into the appropriate recipient specific fields (see picture 1) when sending or proposing the MDS.

##### 2.1. Description

- The exact description of the part is necessary and should be in English
- For metallic- or polymeric parts, please note the current IMDS recommendations

##### 2.2. Part number

The part number is a combination of 13 figures. The first four figures (classification) need not to be specified. The remaining 9 figures must be specified and are comprised of the 6-digit part-number and the 3-digit index. This number must be hyphenated without any blanks (e. g. 123456-789).

##### 2.3. Drawing number – optional

The drawing number has the same form as the part number

##### 2.4. Date of Report - optional

Fill in the actual date

##### 2.5. Supplier-Code - optional

Fill in your supplier code, which is given by Brose's purchasing department

Company data - Microsoft Internet Explorer provided by Brose Fahrzeugteile

**Company data**

Recip. Status: edit mode

Recipient: [Redacted]

Company- / Org.-ID: [Redacted]

Part/Item No.: xxxxxx-xxx

Description: e.g. Seat Adjuster Assy

Drawing No.: xxxxxx-xxx

Drawing dated: xx.xx.xxxx

Drawing Change Level: [Redacted]

Report No.: xxxxx

Date of Report: xx.xx.xxxx (MM/DD/YYYY)

Purchase Order No.: [Redacted]

Bill of Delivery No.: [Redacted]

Supplier Code: xxxxx

Reason for denial: [Redacted]

Change Cancel

Picture 1

### 3. Requirements

#### 3.1. Requirements for materials:

- Mainly for metallic materials and coatings published entries by the IMDS Steering Committee / Steel and Iron List should be used preferably (see also Rec001)

#### 3.2. Requirements for wild cards (jokers)

##### Definition of wild cards

The following examples are regarded as wild cards:

- All wild cards cited in IMDS recommendation 001, e. g. plasticizers, miscellaneous, further additives
- Other general or functional descriptions were accepted in the past and should be avoided in the future. They are also subject of the limitation described in item 3.3. Examples: pigment part, preservative, mineral substances

Wild cards may not content declarable or prohibited substances.

### 3.3. Maximum sum of wild-cards

- The sum of wild cards must not exceed 10% in a homogeneous material.

### 3.4. Wild card “not yet specified”

- “Not yet specified” can only be used in datasheets that are presented long before the initial sampling process. If this wild card is used, an update of the MDS at the initial sampling process at latest becomes mandatory.

### 3.5. Wild card “confidential substances”

- This wild card is only valid for reasons of “know-how protection” of the supplier.
- The correct basic substances have to be declared, but an IMDS user with standard rights is unable to view them.
- “Confidential substances” is not a wild card in its original sense, but the restrictions of chapter 3.2. are valid.
- These restrictions can be overruled in particular cases, if a Brose representative is given access to the confidential data.
- This kind of wild card causes problems in our in-house system

## 4. Concentration of Basic substances

Limits of legal restrictions for concentrations of basic substances and maximum sums for wild cards (see 3.2.) must not be exceeded. Therefore the maximum value is considered to be relevant for the assessment of datasheets.

Our suppliers must take care that there are no prohibited substances regarding GADSL and BN588619-XXX in their submissions.

## 5. New release and update of material datasheets

Datasheets must be input to IMDS and sent to Brose at or before the initial sampling process. Note that:

- The initial sampling process cannot be finished without an accepted IMDS entry
- Missing or incorrect IMDS-entries will result in reclamation and negative supplier assessment

An IMDS entry is necessary for every new initial sample and also for carry-over (= already released) parts, which go into new Brose products. This is also formulated in the Brose Standard 588619 “List of declarable substances”, which is part of Brose’s general business conditions and of every new Brose drawing. Additionally, Brose’s Web-Information for suppliers references IMDS.

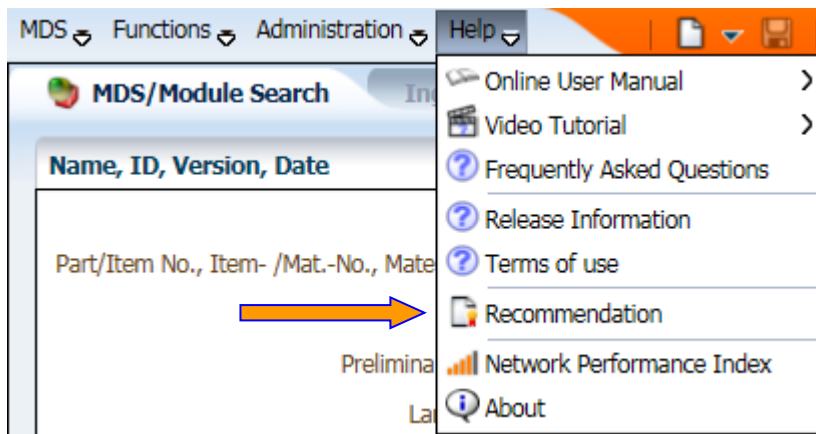
The formal data has to be taken from the actual order form. A presentation of MDS during the development process is necessary on special request. Such data sheets, sent long before the initial sampling date, shall be marked as “Development Sample Report”. Existing material data sheets for a Brose-part number have to be updated in the IMDS under the following conditions:

- material or substances changed
- GADSL substances changed
- Candidate List substances are not in the former datasheet
- application code changed
- parts’ weight changed by > 10%.

Changes need not to be documented if they are within the originally declared tolerances.

## 6. Advices for the IMDS tree structure

The current IMDS recommendations for data are mandatory. They can be found in the IMDS after system logon under the "Recommendation" menu item (see picture 2). In spite of the recommendations, is it possible that in individual cases - depending on the customer's request - adjustments are necessary.



picture 2

## 7. Contact persons

Please read this document carefully. If more information is necessary, please contact your known quality personnel.