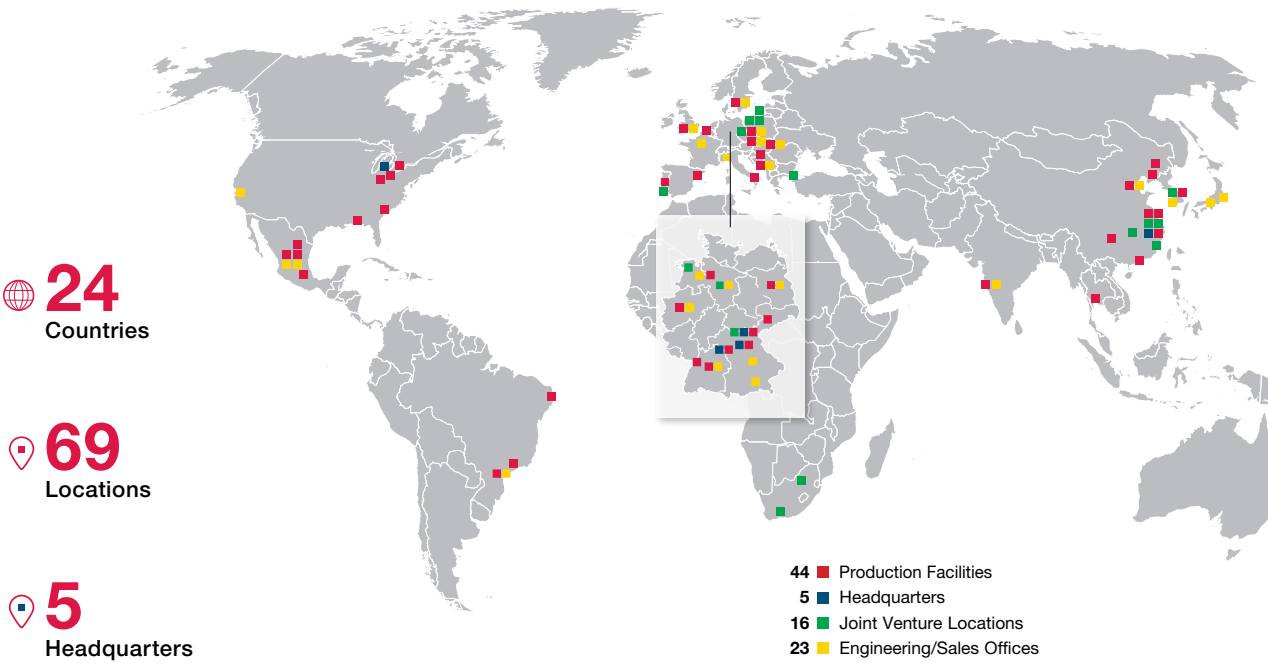


Facts and Figures

Global Presence



Business Development

	2020	2021	2022	2023	2024 (Plan)
Sales in billions of euros	5.1	5.4	7.5	7.9	8.3
Investment in millions of euros	400	343	332	418	424

From 2022 including the Brose Sitech joint venture

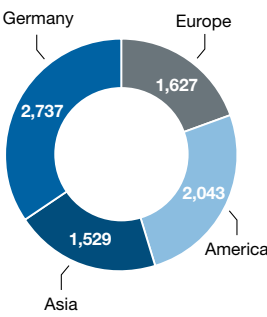
Employees

Region	Brose total	White collar	Blue collar	Apprentices
Germany	10,070	4,672	5,160	238
Europe (without Germany, incl. India and South Africa)	10,090	2,911	7,041	138
China	4,951	1,618	3,329	4
East Asia	263	163	100	0
North America	6,153	1,624	4,482	47
Brazil	455	114	325	16
Worldwide	31,982	11,102	20,437	443

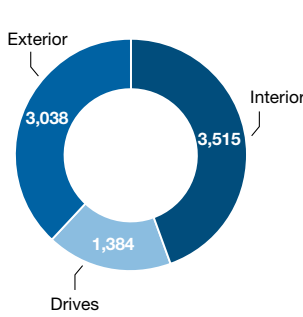
Brose Employees as of Dec. 31, 2023

Net Sales 2023 (in millions of euros)

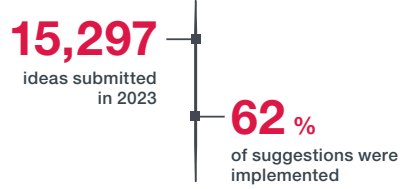
by region



by business unit



Company Suggestion System IDEAS



Products



Exterior

Door systems | Window regulators | Side door drives | Closure systems | Tailgate systems

Interior

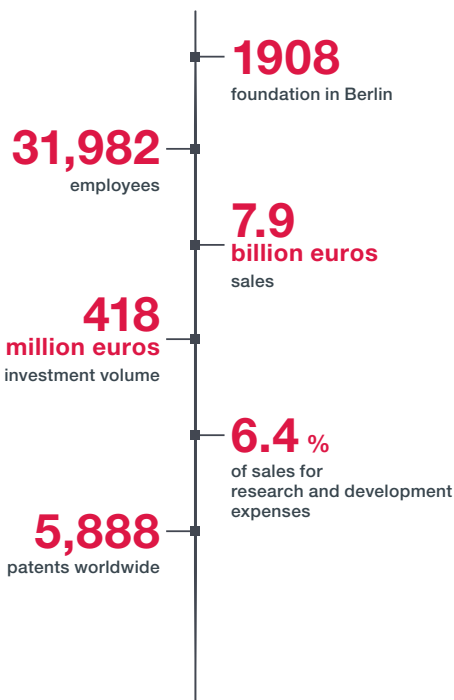
Vehicle seats | Front and rear seat structures | Seat components | Interior adjusters

Drives

Thermal management systems | Electric motors for chassis and steering | Electric oil pumps and actuators | Drives for electric two-wheelers

Brose supplies around 80 automotive and 30 e-bike manufacturers as well as over 40 suppliers with mechatronic systems and electric drives for various mobility applications. Every second new car worldwide is equipped with at least one Brose product.

Brose in Figures



Brose SE

Communications & Marketing

Max-Brose-Straße 1
96450 Coburg

brose.com

04/2024